

## CITY OF LINCOLN DISTRICT COUNCIL

### Community Infrastructure Levy Charging Schedule

<b>Name of Charging Authority</b>	<b>City of Lincoln Council</b>
<b>Rates (£m) at which CIL is to be chargeable</b>	CIL will be charged in Pounds Sterling (£) per square metre at differential rates according to the type of development and by location as set out in the Commercial and Residential Tables of this Schedule.
<b>Charging Zones</b>	The Charging Zones to which CIL will be applied are those as identified on the tables and maps as set out within this Schedule.
<b>How the Chargeable amount will be Calculated</b>	<p>The charging authority will calculate the amount of CIL chargeable to a qualifying development utilising the formula set out in Part 5 of the CIL Regulations. In summary (and subject to any changes that have occurred or may occur as a result of future amendments to the Regulations) the amount of CIL chargeable will be calculated as follows: CIL Rate x Chargeable Floor Area x BCIS Tender Price Index (at Date of Planning Permission) / BCIS Tender Price Index (at Date of Charging Schedule)</p> <p>The Chargeable Floor Area makes allowance for previous development on the site. The net chargeable floor area amounts to the gross internal area of the chargeable development less the gross internal area of any existing buildings that qualify for exemption on the site.</p> <p><b>This summary does not take account of every aspect of the Regulations.</b></p>
<b>Further Information</b>	Further information, for example, on exemptions from paying the CIL will be available on the district council webpages in due course. In many cases, this will be via links to national guidance.

## CITY OF LINCOLN COUNCIL CIL Charging RATES (£ per Sqm)

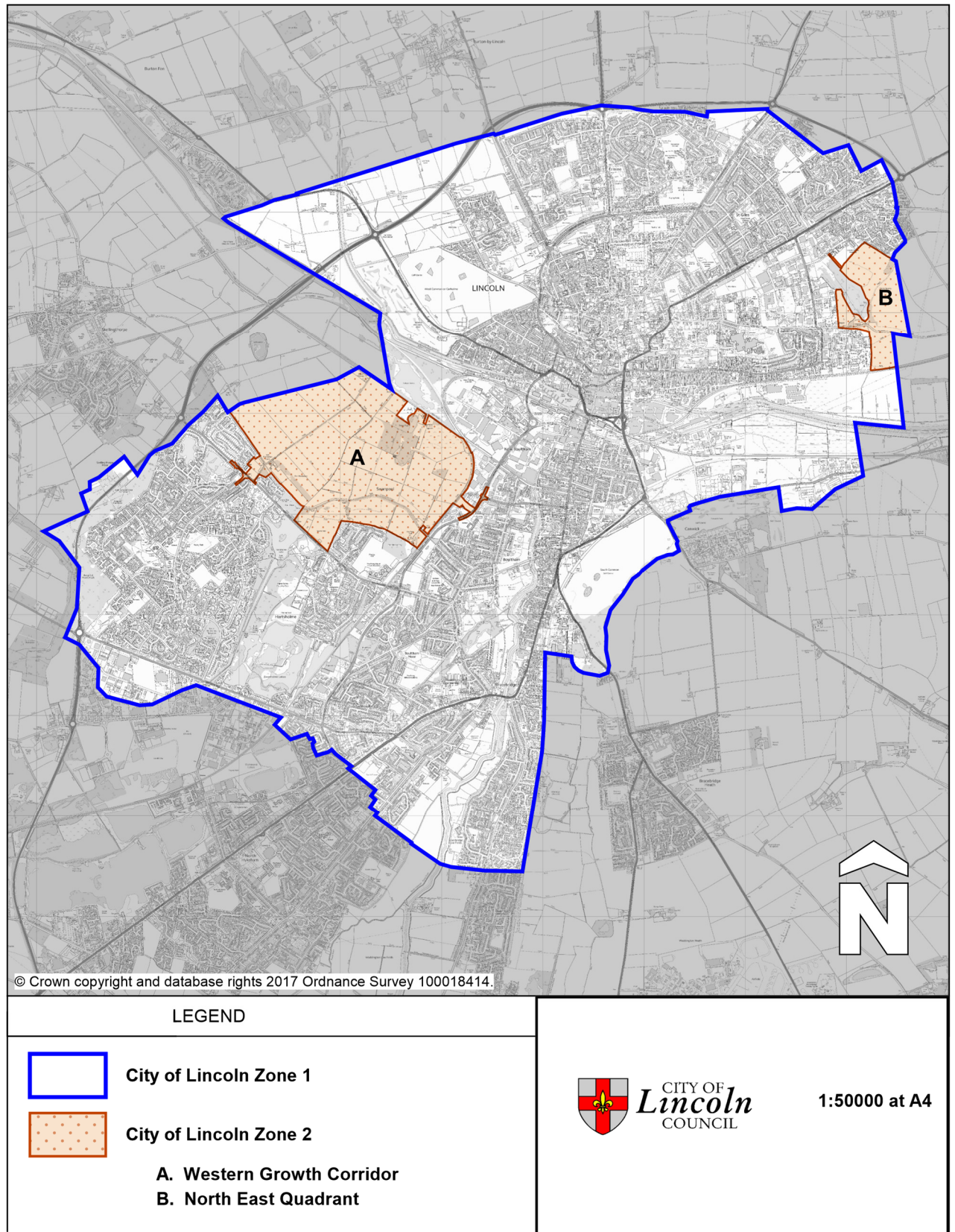
CITY OF LINCOLN COUNCIL CIL CHARGING SCHEDULE RESIDENTIAL CHARGING RATES			
		Dwellings excluding apartments	Apartments
Zone 1	Lincoln Strategy Area	£25	£0
Zone 2	Developments at Western Growth Corridor and North East Quadrant sustainable urban extensions	£20	£0

CITY OF LINCOLN COUNCIL CIL CHARGING SCHEDULE COMMERCIAL CHARGING RATES (APPLICABLE TO WHOLE DISTRICT)	
Convenience retail	£40
All other uses*	£0

\*All other uses' and the £0 rate include comparison retail and retail warehousing.

# City of Lincoln Council Community Infrastructure Levy Charging Zones

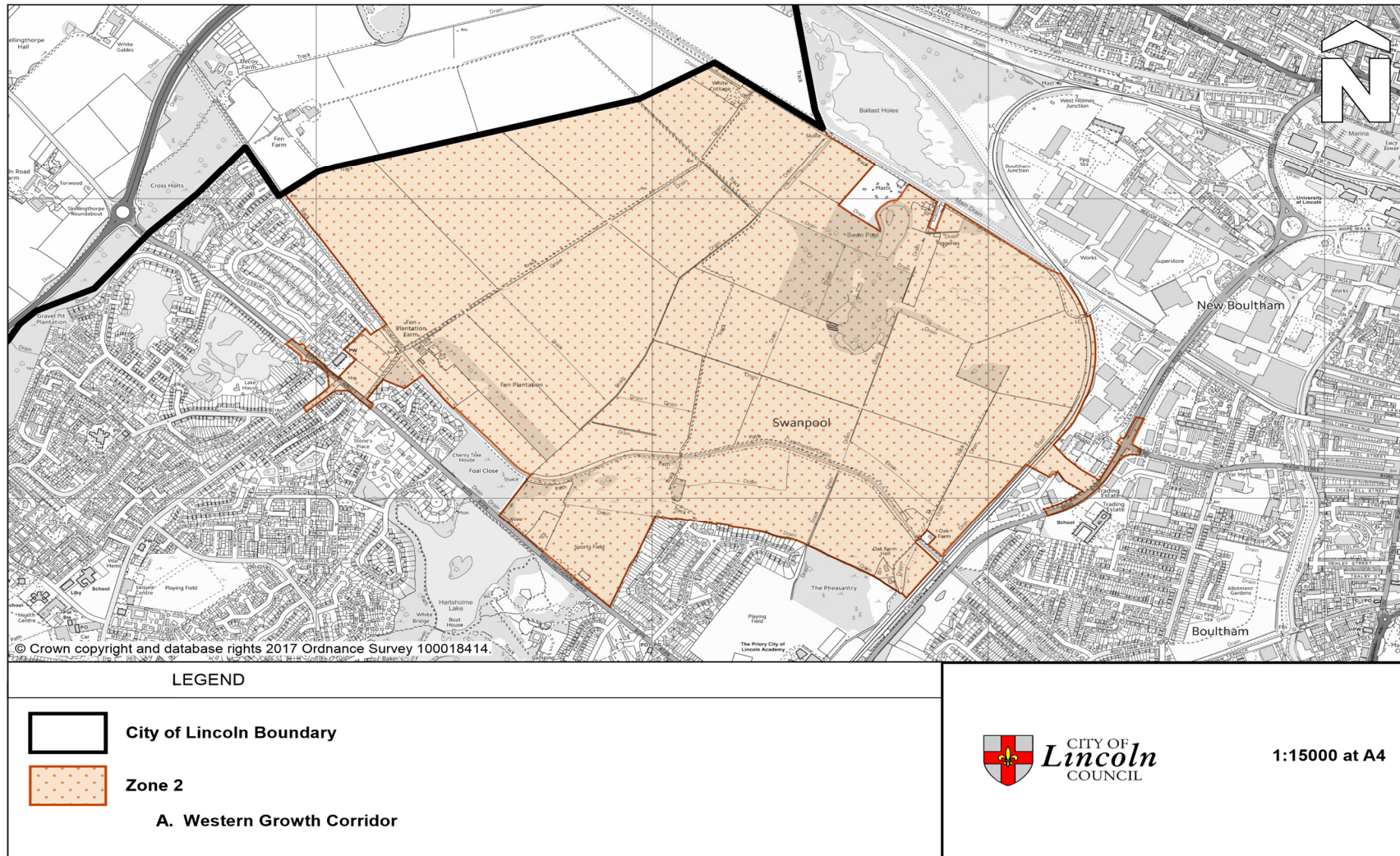
## Zones 1 and 2





# City of Lincoln Council community infrastructure Levy Charging Schedule

## Zone 2 Inset Map A Western Growth corridor



City of Lincoln Council community infrastructure Levy Charging Schedule

Zone 2 Inset Map B North East Quadrant

